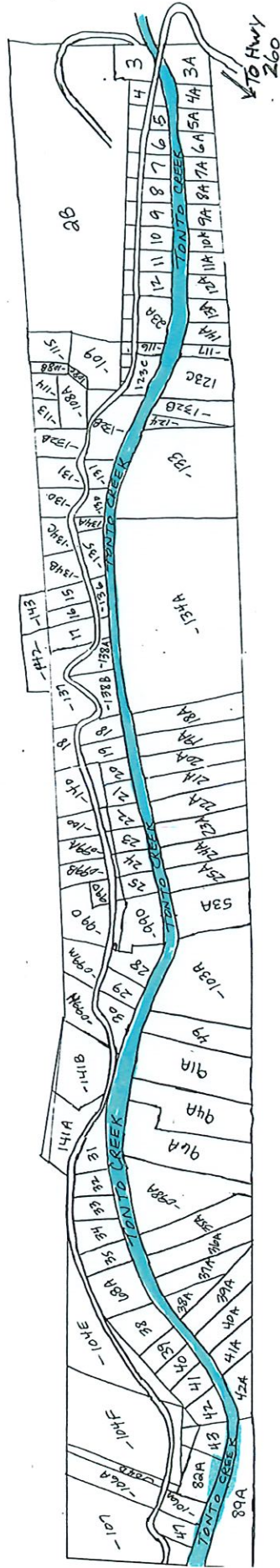


BEAR FLAT

ELEVATION 5810 FT

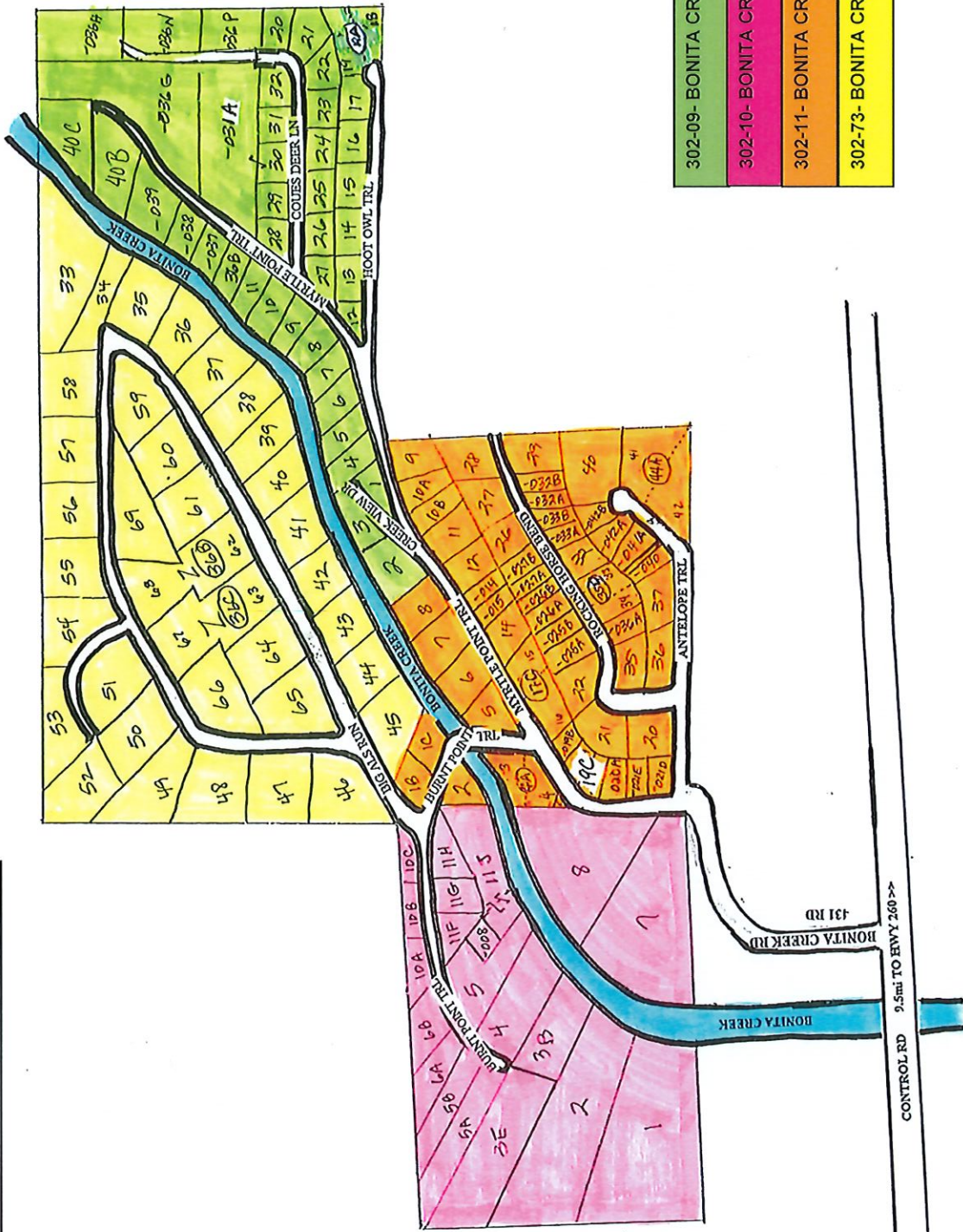
WELLS REQUIRED, HORSES OK,
ELEVATION 5810 FT, ZONING -
GU, NO CELL PHONE SERVICE,
HELLSGATE FIRE DEPT



NOT A PLAT MAP
FOR LOCATION
PURPOSES ONLY

BONITA CREEK

DUDE FIRE BURN AREA, LOTS FROM 1/4 TO 1.0+ ACRES, WATER CO, HORSES OK, ELEVATION 5930 FT, ZONING - GU, CELL PHONE AND INTERNET SERVICE AVAILABLE, WATER WHEEL FIRE & MEDICAL, FIREWISE COMMUNITY. NO MOBILES OR RV
www.bonitacreekhoa.org



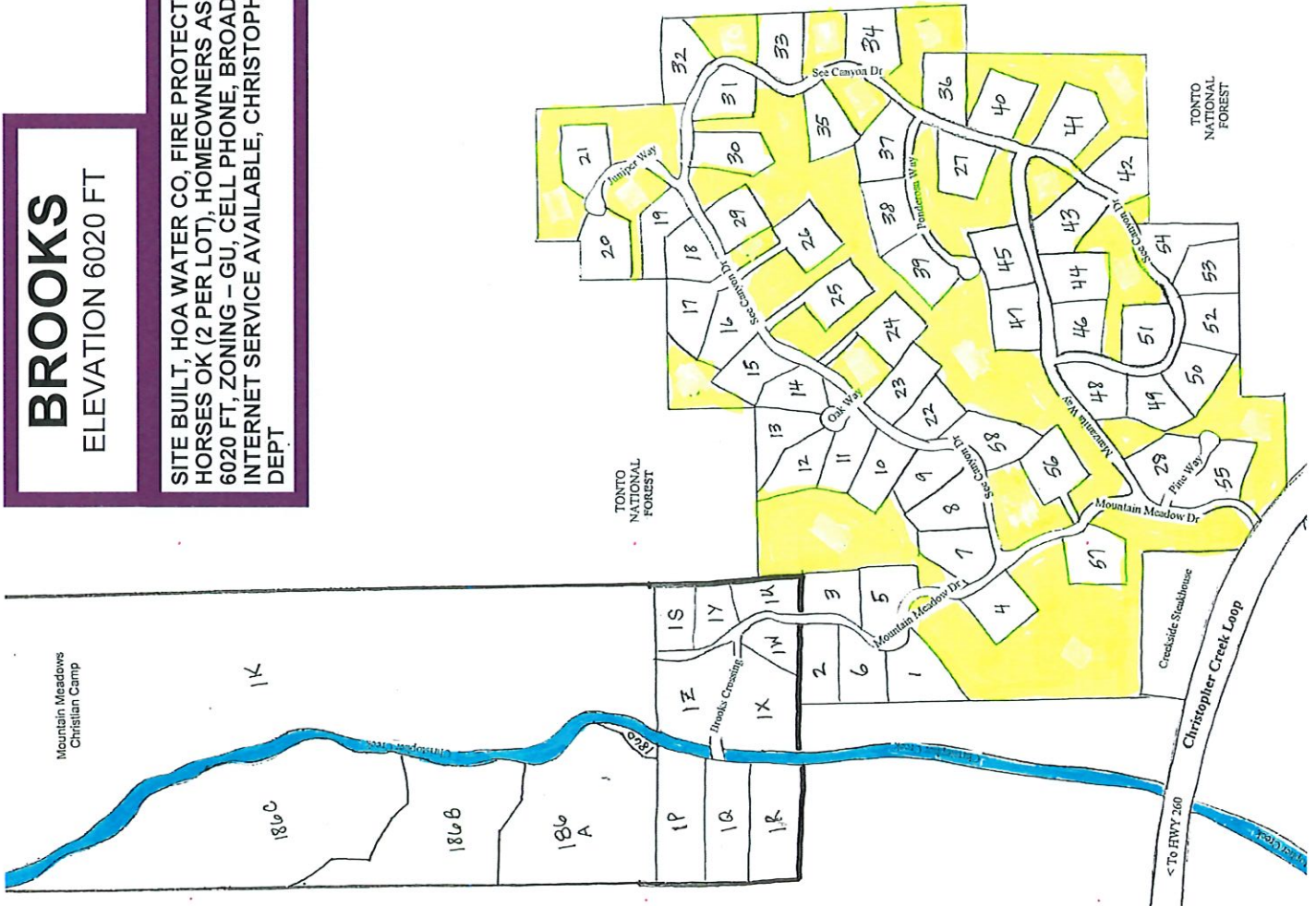
NOT A PLAT MAP
FOR LOCATION
PURPOSES ONLY

BROOKS
ELEVATION 6020 FT

SITE BUILT, HOA WATER CO, FIRE PROTECTION, GATED,
HORSES OK (2 PER LOT), HOMEOWNERS ASSN, ELEVATION
6020 FT, ZONING - GU, CELL PHONE, BROADBAND AND
INTERNET SERVICE AVAILABLE, CHRISTOPHER KOHL'S FIRE
DEPT

SEE CANYON
ELEVATION 6050 FT

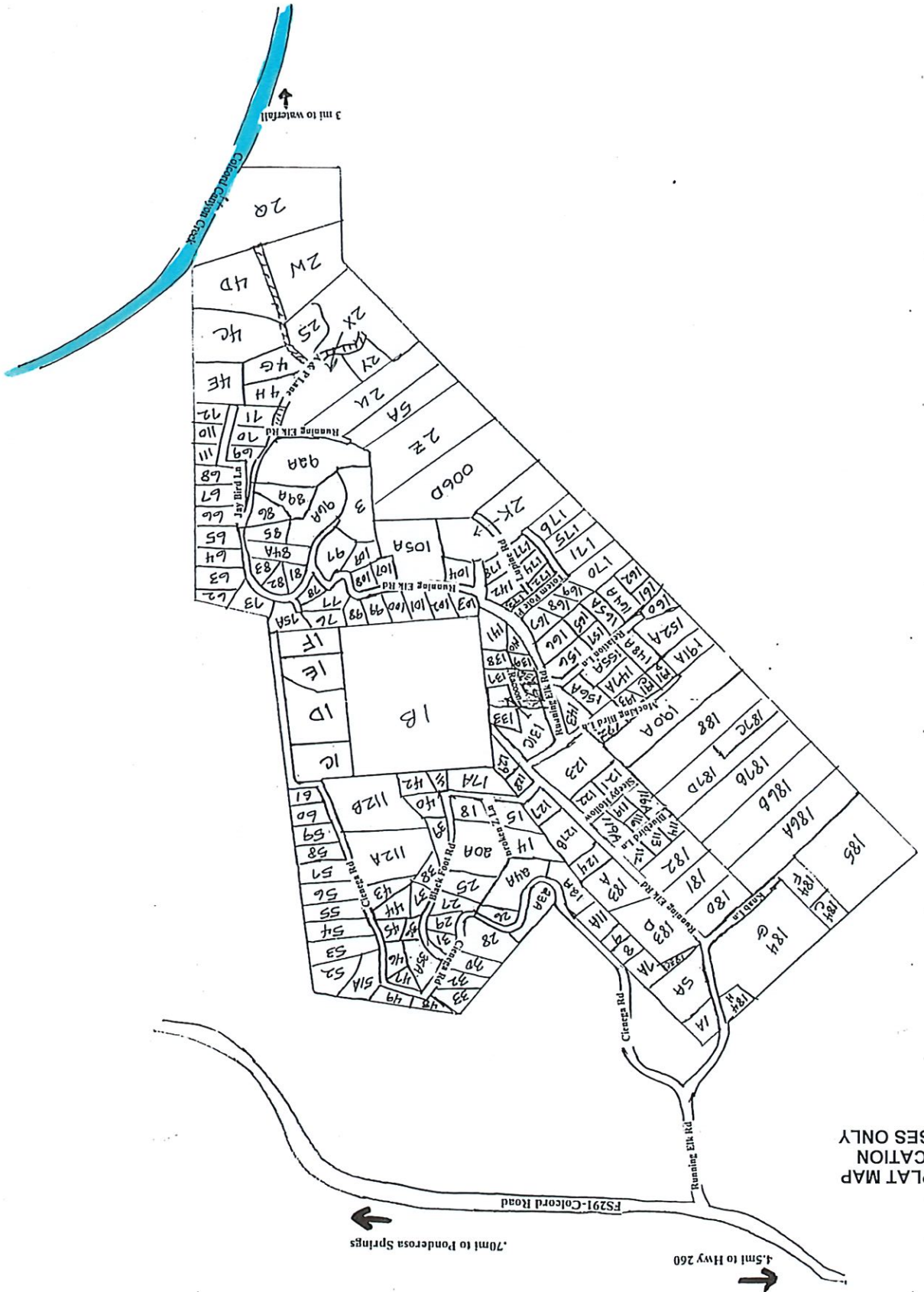
125 ACRES, 67 ACRES COMMON AREA, 1.0± ACRE LOTS - 58
CABINS, HOA WATER CO, SITE BUILT,
NO HORSES, HOMEOWNERS ASSN, ELEVATION 6050 FT,
ZONING - R1L-D40, CELL PHONE, BROADBAND AND INTER-
NET SERVICE AVAILABLE, CHRISTOPHER KOHL'S FIRE
DEPT



COLCORD MOUNTAIN HOMESITES

ELEVATION 6221 FT

NOT A PLAT MAP
FOR LOCATION
PURPOSES ONLY

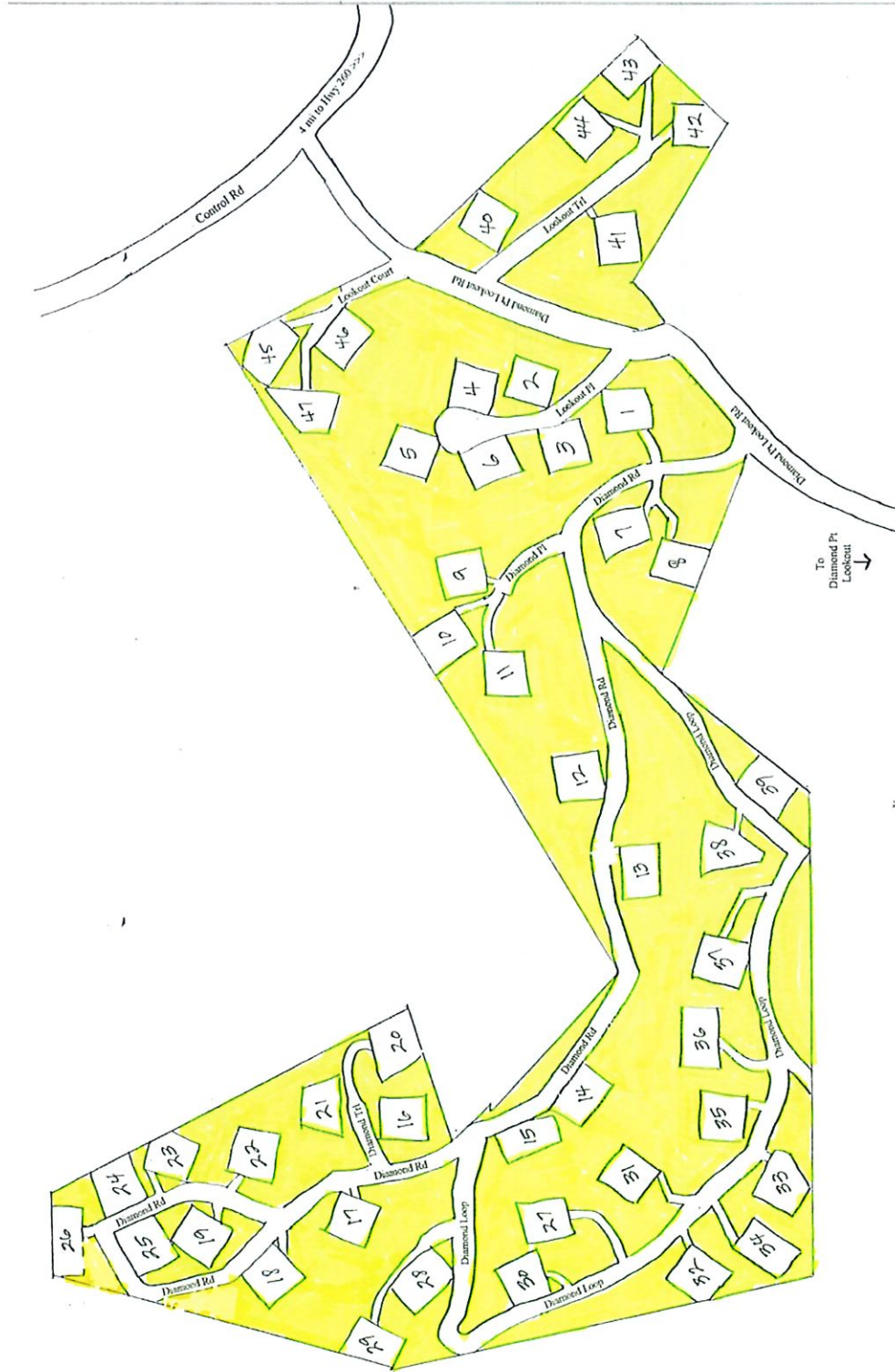


WATER CO, HORSES OK, MAIN ROADS ARE COUNTY MAINTAINED,
MOBILE & TRAVEL TRAILERS OK, ELEVATION 6395 FT, ZONING -
GU, CHRISTOPHER KOHL'S FIRE DEPT, SOME CELL SERVICE,
INTERNET AVAILABLE

ELEVATION 5655 FT, GATED COMMUNITY,
 0.5± ACRE LOTS, 84 ½ ACRES OF COM-
 MON AREA, HOMEOWNERS ASSN, HOA
 WATER CO, NO HORSES, ROADS NOT
 MAINTAINED IN WINTER, ZONING - R1L-
 D18, HELLSGATE FIRE DEPT, SOME CELL
 PHONE SERVICE AVAILABLE, INTERNET
 AVAILABLE

DIAMOND POINT SUMMER HOMES

ELEVATION 5,655 FT

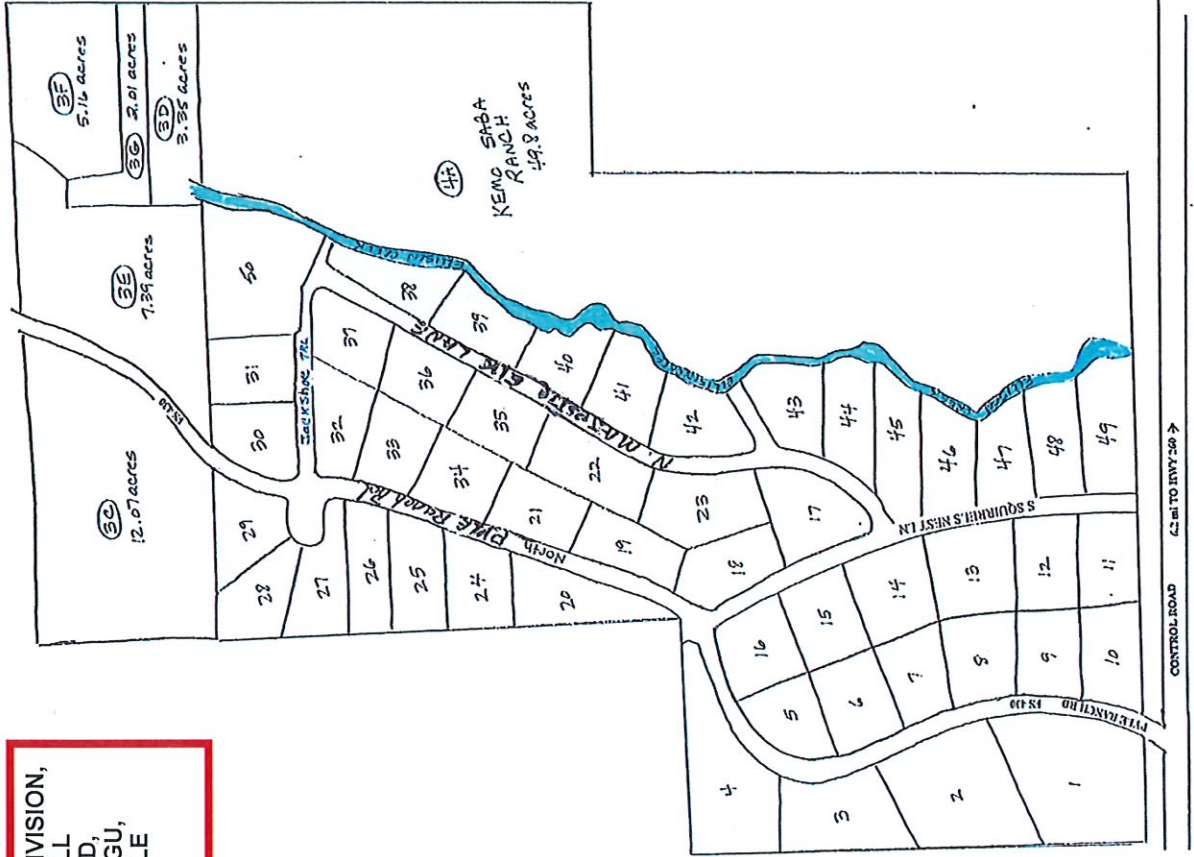


ELLISON CREEK ESTATES

ELEVATION 5790 FT

ELLISON CREEK RUNS THROUGH THE SUBDIVISION,
 1.0± ACRE LOTS, NO LANDLINE PHONES, CELL
 PHONE SERVICE AVAILABLE, WELLS NEEDED,
 HORSES OK, ELEVATION 5790 FT, ZONING - GU,
 HELLSGATE FIRE DEPT, INTERNET AVAILABLE
 MOBILE AND RV OK

La Cienega
 Ranch
 001C



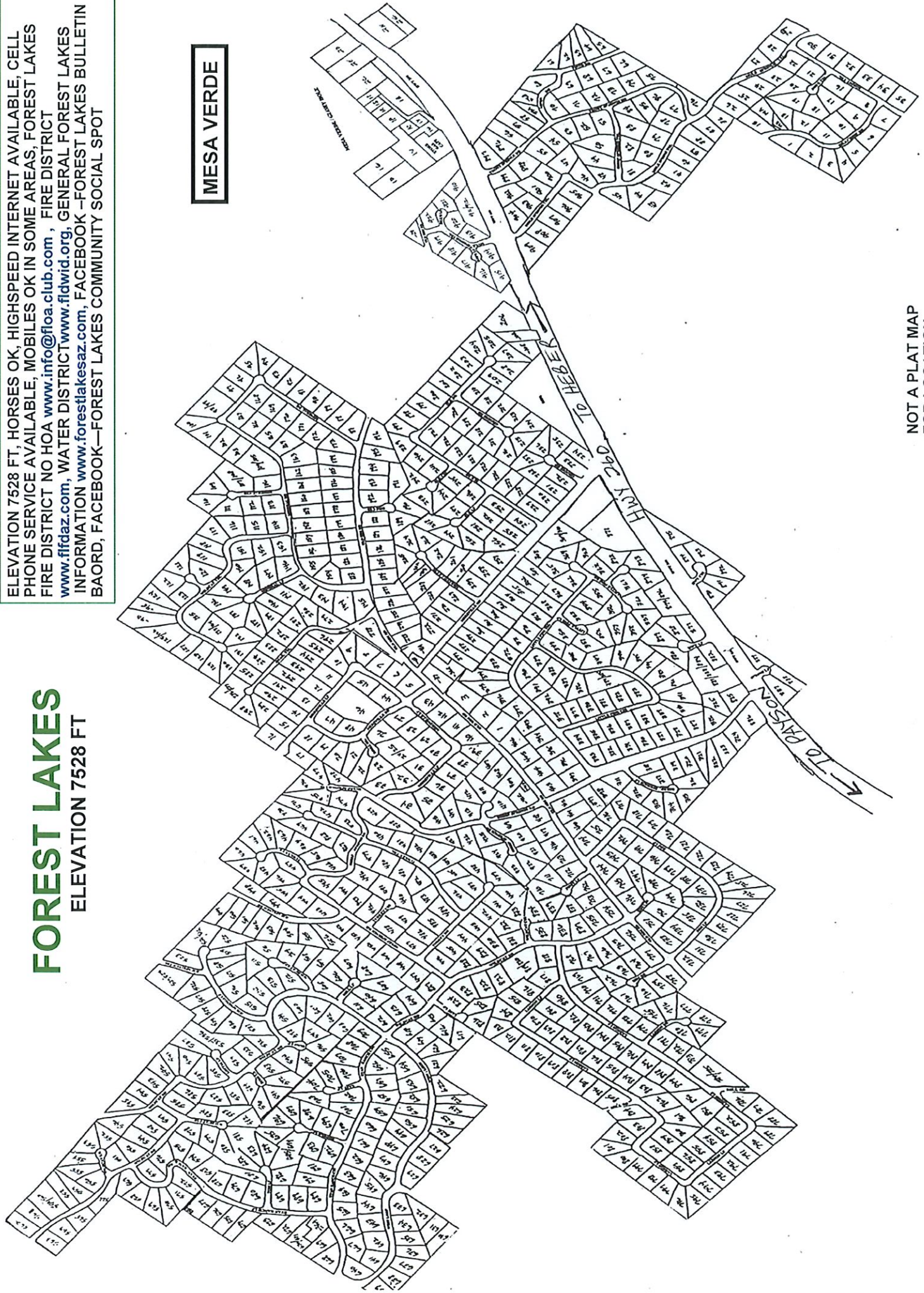
NOT A PLAT MAP
 FOR LOCATION
 PURPOSES ONLY

FOREST LAKES

ELEVATION 7528 FT

ELEVATION 7528 FT, HORSES OK, HIGHSPEED INTERNET AVAILABLE, CELL PHONE SERVICE AVAILABLE, MOBILES OK IN SOME AREAS, FOREST LAKES FIRE DISTRICT NO HOA www.info@foa.club.com, FIRE DISTRICT www.fafdaz.com, WATER DISTRICT www.fldwid.org, GENERAL FOREST LAKES INFORMATION www.forestlakesaz.com, FACEBOOK -FOREST LAKES BULLETIN BAORD, FACEBOOK—FOREST LAKES COMMUNITY SOCIAL SPOT

MESA VERDE



NOT Plat Map
Location purposes only.

NOT A PLAT MAP
FOR LOCATION
PURPOSES ONLY

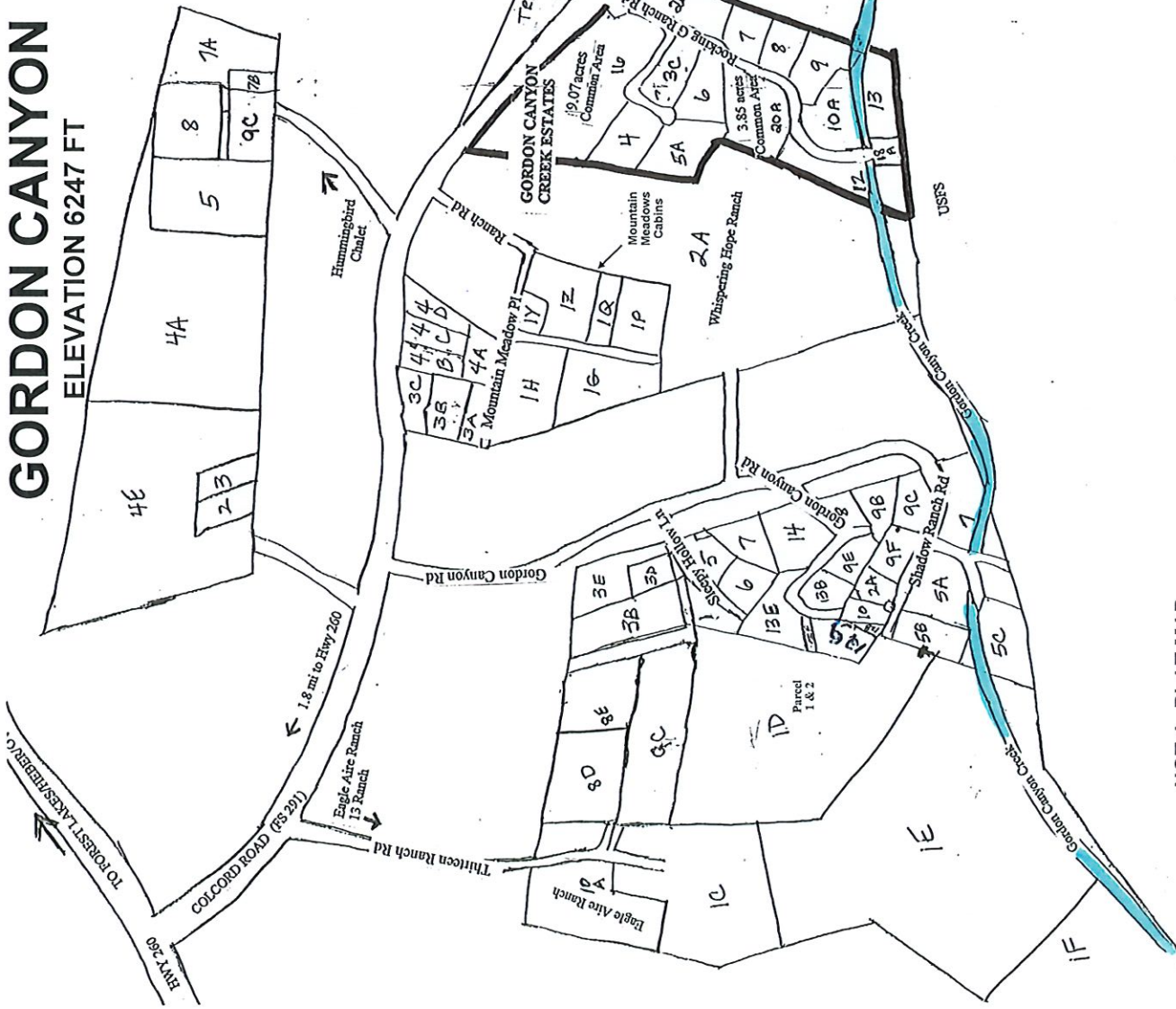
GORDON CANYON

ELEVATION 6247 FT

WELLS REQUIRED, HORSES OK, ELEVATION 6200 FT, ZONING - GU, CELL PHONE AND INTERNET AVAILABLE, CHRISTOPHER KOHL'S FIRE DEPT.

COLCORD COVE 1.0± ACRE LOTS, SITE BUILT ONLY, ALL LOTS BACK TO USFS AND ARE ON SEASONAL CREEK, UNDERGROUND UTILITIES, CO-OP WELLS, HORSES OK, HOMEOWNERS ASSN, GATED COMMUNITY, CELL PHONE AVAILABLE ELEVATION 6305 FT, ZONING - GU, CHRISTOPHER KOHL'S FIRE DEPT, SITE. BUILT HOMES, WATER CO.

CHAMBERLAIN RANCH VOLUNTARY HOA, HOA WATER CO, ELEVATION 6305FT, ZONING R111-D20PAD, CELL PHONE, SERVICE AVAILABLE, CHRISTOPHER KOHL'S FIRE DEPT..



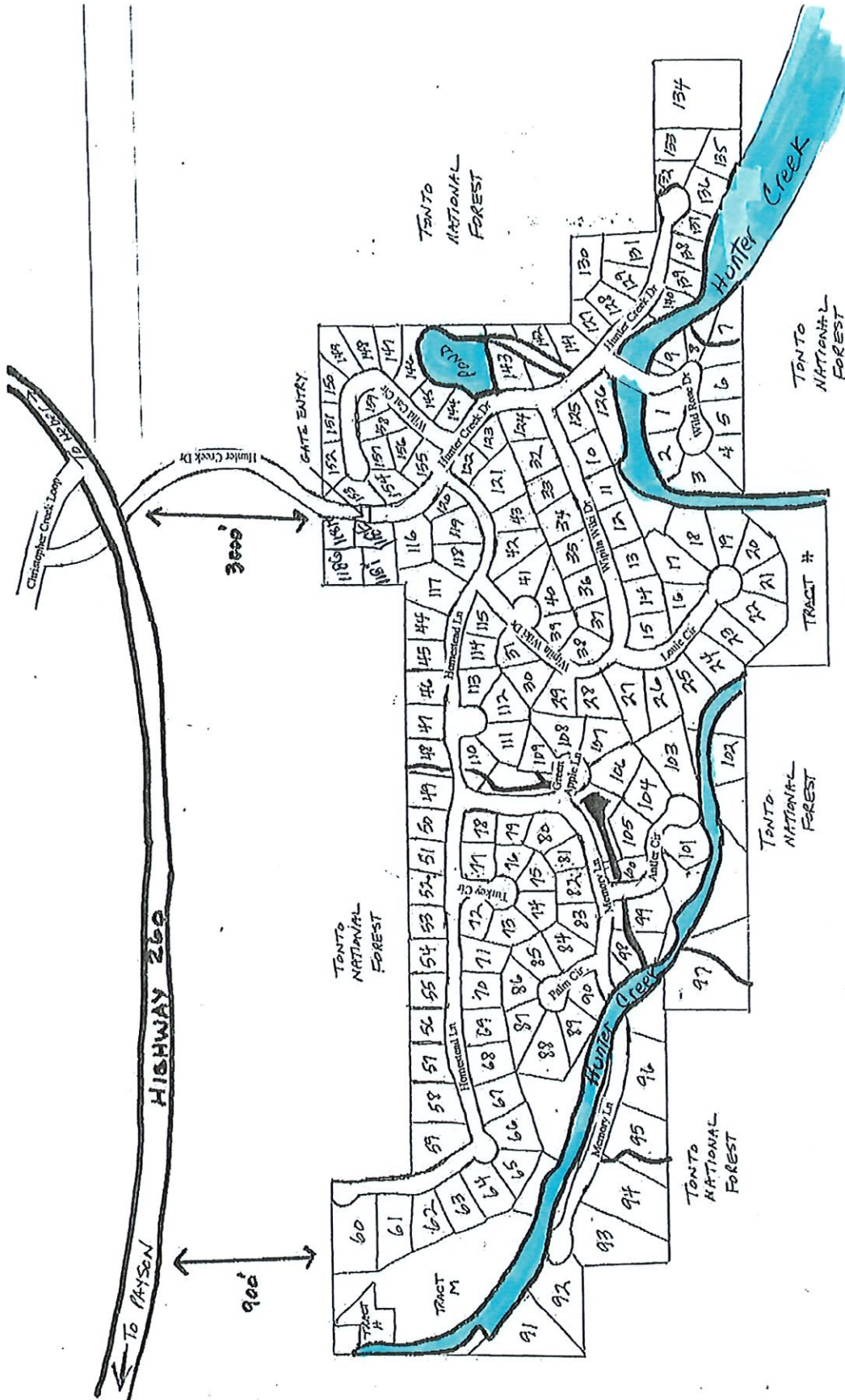
GORDON CANYON CREEK ESTATES
 GATED COMMUNITY, HOMEOWNERS ASSN., PAVED ROADS, HOA WATER CO, HORSES OK, ELEVATION 6200 FT, ZONING - GU, CHRISTOPHER KOHL'S FIRE DEPT, CELL PHONE AND INTERNET SERVICE AVAILABLE, SITE BUILT COMMUNITY WATER

NOT A PLAT MAP
 FOR LOCATION PURPOSES ONLY

HUNTER CREEK

ELEVATION 5920 FT

GATED COMMUNITY, UNDERGROUND UTILITIES, SEWER, PAVED ROADS, 100 YR. CERTIFIED WATER SUPPLY, HOA WATER CO, SITE BUILT ONLY, HOMEOWNERS ASSN, ELEVATION 5920 FT, ZONING - R1L-D18, CELL PHONE AND INTERNET SERVICE AVAILABLE, CHRISTOPHER KOHL'S FIRE DEPT www.hcr-hoa.com

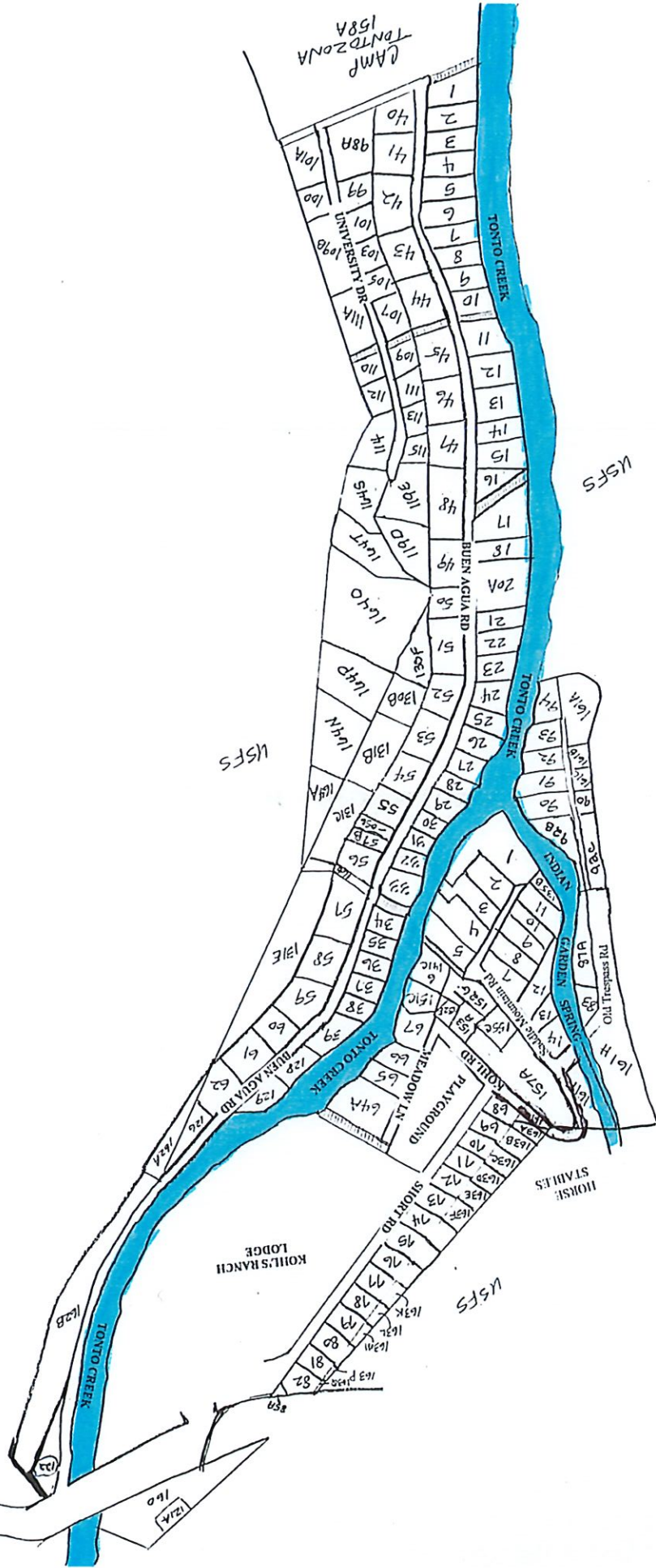


NOT A PLAT MAP
FOR LOCATION
PURPOSES ONLY

KOHL'S TONTO CREEK RANCH

ELEVATION 5250 - 5335 FT

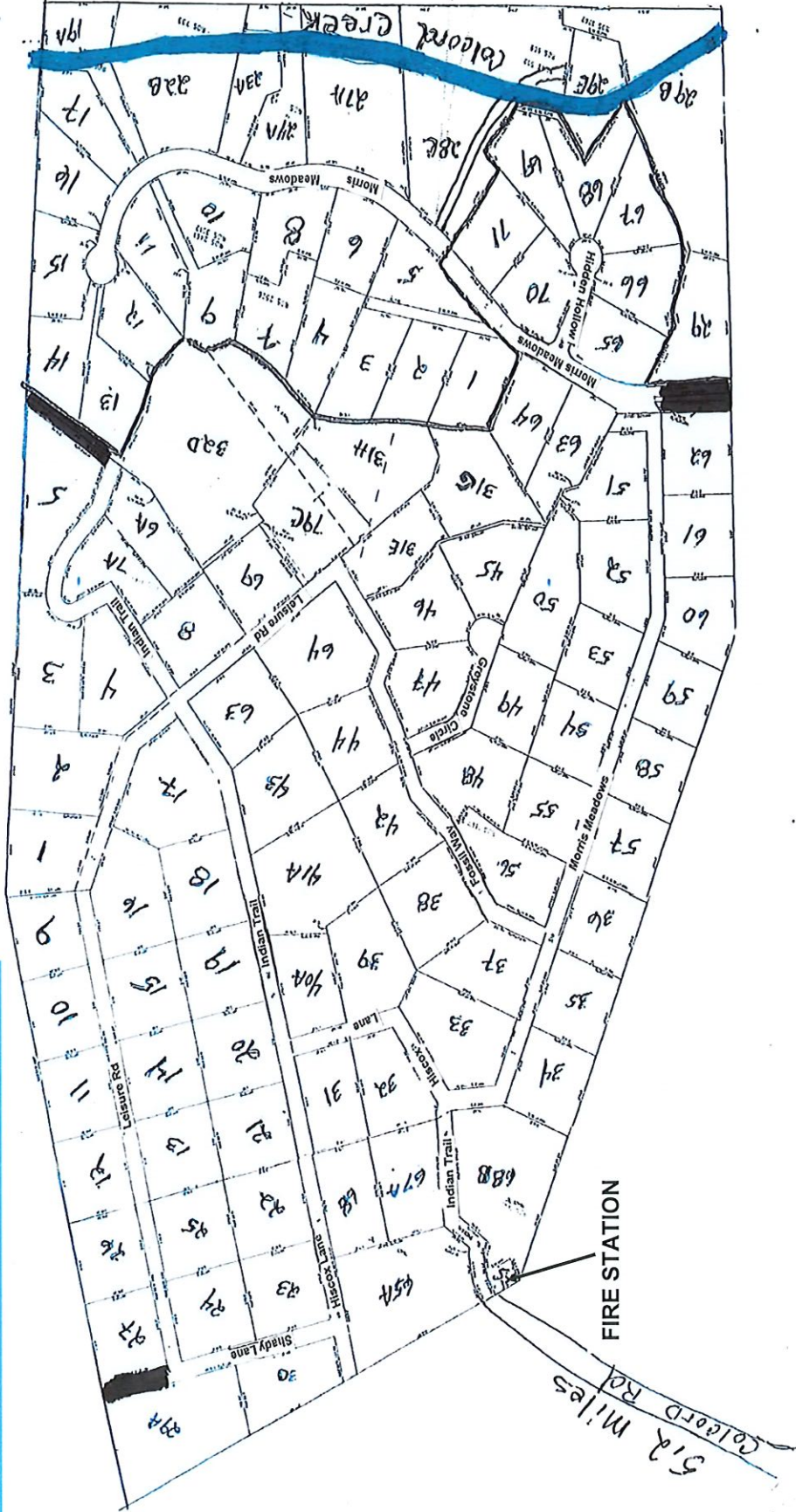
SITE BUILT, NO HORSES, WATER CO, ON TONTO CREEK, ELEVATION 5250-5335 FT, RESORT WITH RESTAURANT & SALOON, ZONING - GU, SOME CELL PHONE SERVICE AVAILABLE, INTERNET AVAILABLE, CHRISTOPHER KOHL'S FIRE DEPT www.krhoa.com



NOT A PLAT MAP
FOR LOCATION
PURPOSES ONLY

PONDEROSA SPRINGS

LOCATED NEAR BEAUTIFUL COLCORD CREEK IN TALL PINES, TUCKED UNDER THE RIM AT THE END OF COLCORD ROAD. SURROUNDED BY USFS FOR THOSE WHO WANT THE SECLUSION OF THE DEEP WOODS. 1.0± ACRE MINIMUM LOTS, FIRE PROTECTION, WELLS REQUIRED, HORSES OK, TRAILERS & MOBILES OK, ELEVATION 6497 FT, ZONING - GU, CHRISTOPHER KOHL'S FIRE DEPT, CELL AND INTERNET SERVICE AVAILABLE



PONDEROSA SPRINGS ESTATES

LOCATED NEAR BEAUTIFUL COLCORD CREEK STREAM IN TALL PINES, TUCKED UNDER THE RIM AT THE END OF COLCORD ROAD. SURROUNDED BY USFS FOR THOSE WHO WANT THE SECLUSION OF THE DEEP WOODS. 1.0± ACRE MINIMUM LOTS, NO TRAILERS OR MOBILES, NO HORSES, WELLS REQUIRED, ELEVATION 6497 FT, ZONING - GU, CELL PHONE AND INTERNET SERVICE AVAILABLE, CHRISTOPHER KOHL'S FIRE DEPT

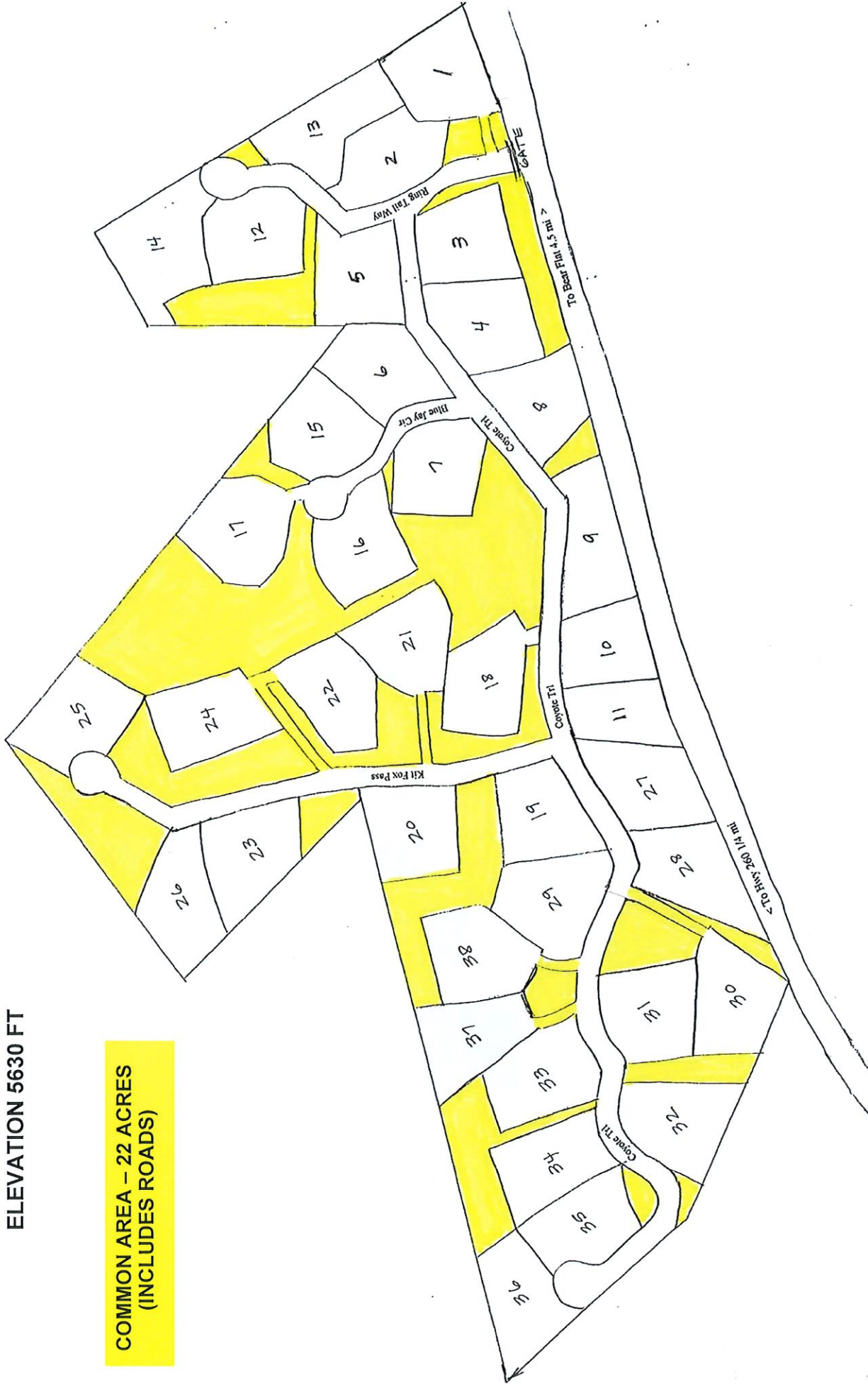
NOT A PLAT MAP
FOR LOCATION
PURPOSES ONLY

THOMPSON DRAW ONE SUMMER HOMES

ELEVATION 5630 FT

COMMON AREA - 22 ACRES
(INCLUDES ROADS)

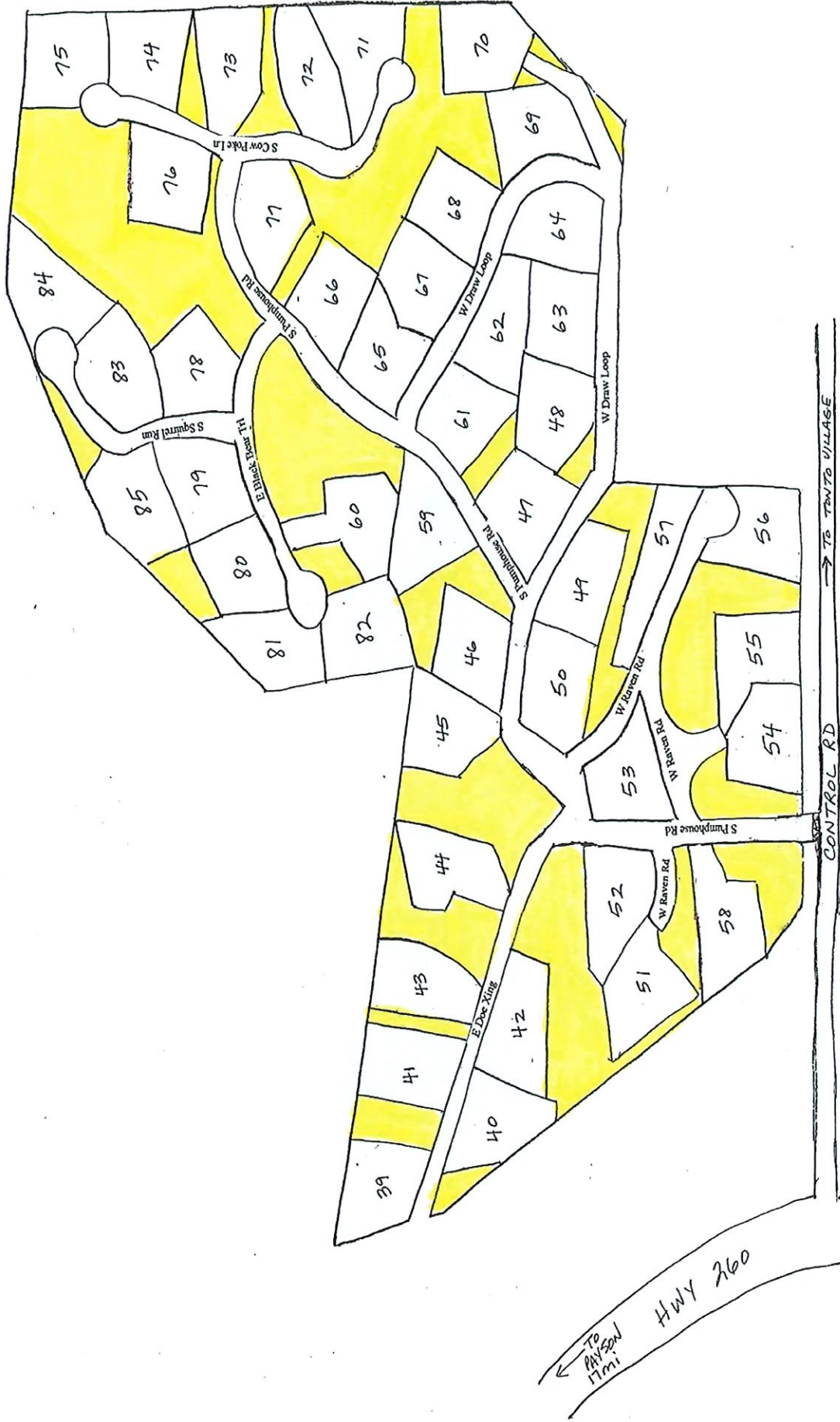
GATED COMMUNITY, 22 ACRES COMMON AREA, HOMEOWNERS ASSN, ARCHITECTURAL COMMITTEE, ELEVATION 5630 FT, NO HORSES, ZONING - R1L-D18, CELL PHONE AND INTERNET SERVICE AVAILABLE, HELLSGATE FIRE DEPT HOA WATER CO
www.thompsondrawi.org



NOT A PLAT MAP
FOR LOCATION
PURPOSES ONLY

THOMPSON DRAW TWO

GATED COMMUNITY, HOMEOWNERS ASSN, NO HORSES, 47 CABINS ON 1 ACRE LOTS, 34 ACRES OF COMMON AREA, ELEVATION 5690 FT, NO HORSES, ZONING - R1L-D18, CELL PHONE AND INTERNET SERVICE AVAILABLE, HELLSGATE FIRE DEPT, HOA WATER CO www.thompsondrawwii.org



COMMON AREA - 22 ACRES
(INCLUDES ROADS)

NOT A PLAT MAP
FOR LOCATION
PURPOSES ONLY

TONTO RIM RANCH

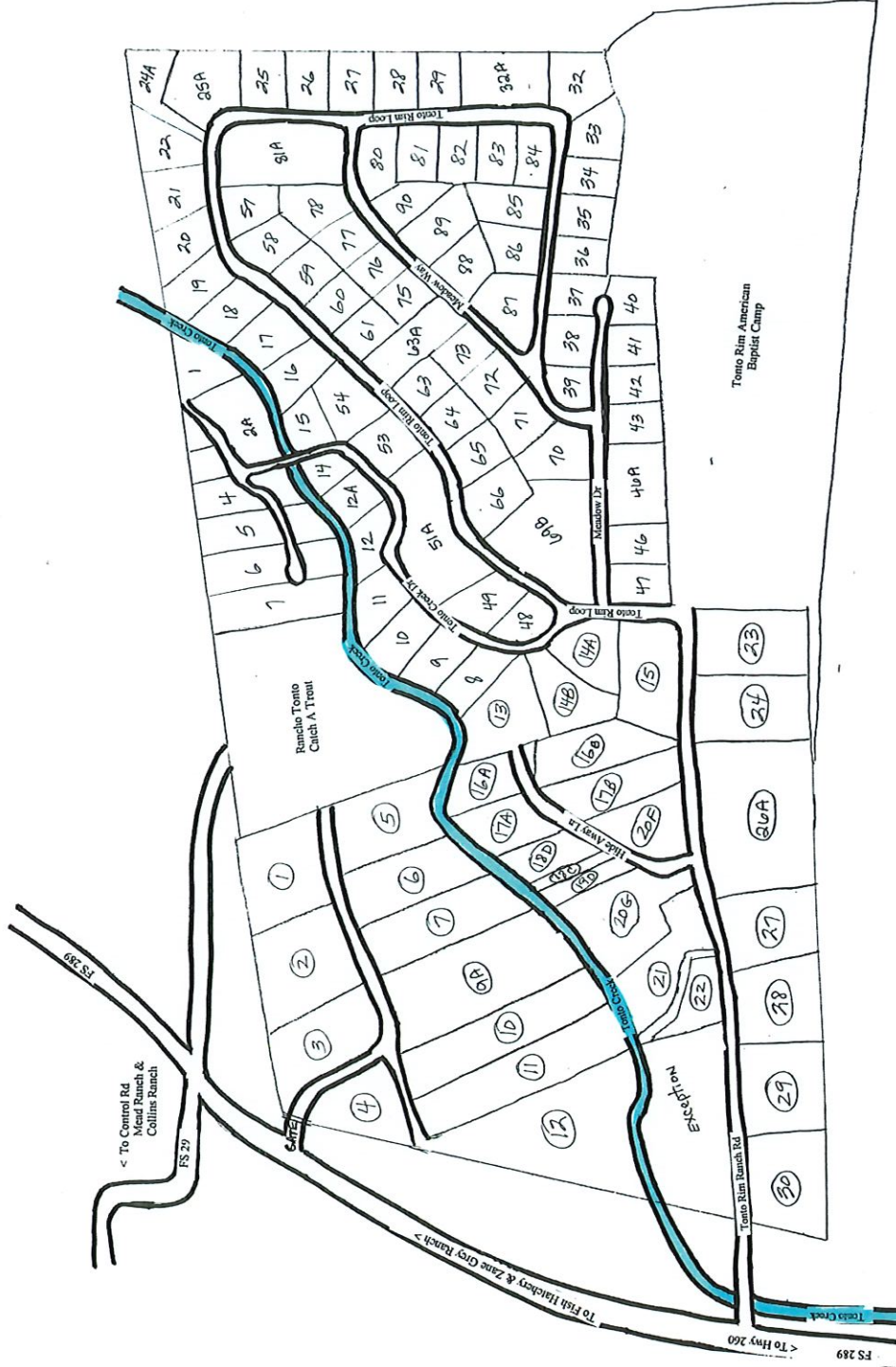
(LOT # CIRCLED)
ELEVATION 5700 FT

HOA WATER CO, NO HORSES LOT 1 - 12,
GATED, ROADS NOT MAINTAINED IN
WINTER ELEVATION 5700 FT, ZONING -
GU, SOME CELL PHONE SERVICE AVAIL-
ABLE, CHRISTOPHER KOHL'S FIRE DEPT

TONTO CREEK ESTATES

ELEVATION 5830 FT

WATER CO, NO HORSES,
HOMEOWNERS ASSN,
ROADS NOT MAINTAINED
IN WINTER, IRRIGATION
WATER IN SUMMER
FROM DICK WILLIAMS
CREEK, ELEVATION 5830
FT, ZONING - GU, SOME
CELL PHONE SERVICE
AVAILABLE, CHRISTO-
PHER KOHL'S FIRE DEPT



NOT A PLAT MAP
FOR LOCATION
PURPOSES ONLY

TONTO VILLAGE III

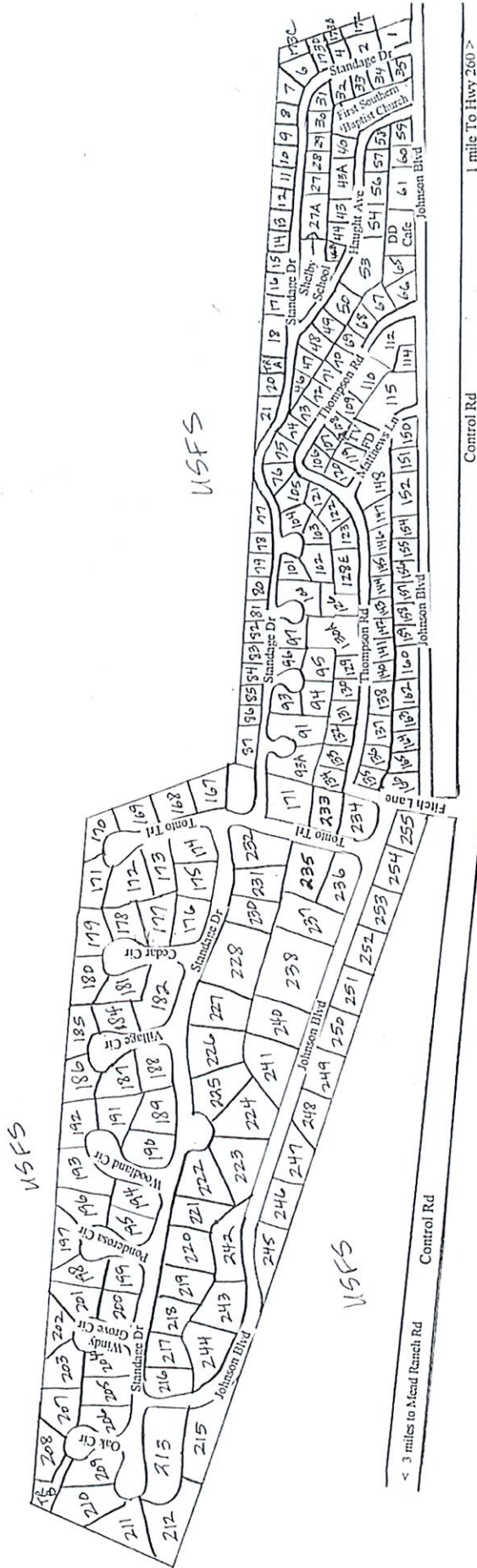
ELEVATION 5785 FT

1/3 ACRE LOTS, WATER CO, MOBILES OVER 600 SQ FT
 OK, NO HORSES, ELEVATION 5785 FT, ZONING - GU,
 SOME CELL PHONE SERVICE AVAILABLE, INTERNET
 AVAILABLE, HELLSGATE FIRE DEPT

TONTO VILLAGE I & II

ELEVATION 5785 FT

WATER CO, CHURCH, RESTAURANT & BAR,
 HORSES OK, ELEVATION 5785 FT, ZONING - GU,
 SOME CELL PHONE SERVICE AVAILABLE, INTERNET
 AVAILABLE, HELLSGATE FIRE DEPT



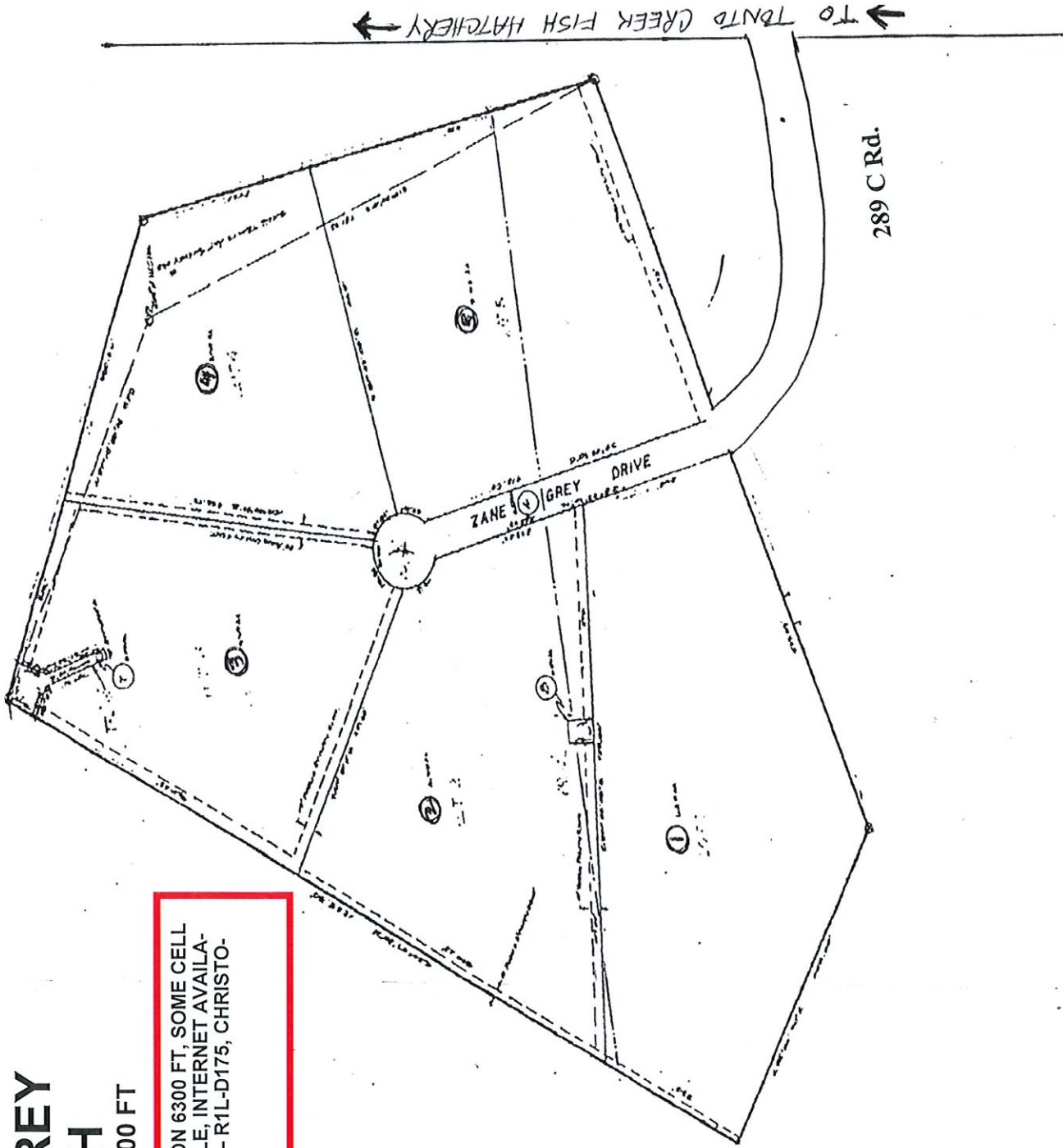
NOT PLAT MAP
 FOR LOCATION
 PURPOSES ONLY

ZANE GREY RANCH

ELEVATION 6300 FT

HOA WATER CO. ELEVATION 6300 FT, SOME CELL PHONE SERVICE AVAILABLE, INTERNET AVAILABLE. HORSES OK ZONING - R1L-D175, CHRISTOPHER KOHL'S FIRE DEPT

NOT PLAT MAP FOR LOCATION PURPOSES ONLY



ZANE GREY MEADOWS

WELLS REQUIRED, HORSES OK, ELEVATION 6010 FT, ZONING - GU, HELLSGATE FIRE DEPT, SOME CELL PHONE SERVICE AVAILABLE, INTERNET AVAILABLE

COLLINS RANCH

1.0± ACRE LOTS, SITE BUILT ONLY, COUNTY MAINTAINED ROADS, HORSES OK, ELEVATION 6000 FT, WATER USERS ASSN ZONING - GU, SOME CELL PHONE SERVICE AVAILABLE, INTERNET AVAILABLE, HELLSGATE FIRE DEPT

MEADS RANCH

COUNTY MAINTAINED ROADS, HORSES OK, ELEVATION 6060 FT, WATER CO, WATER MORATORIUM - NO NEW METERS AT THIS TIME, ZONING - GU, SOME CELL PHONE SERVICE AVAILABLE, INTERNET AVAILABLE, HELLSGATE FIRE DEPT



NOT A PLAT MAP FOR LOCATION PURPOSES ONLY